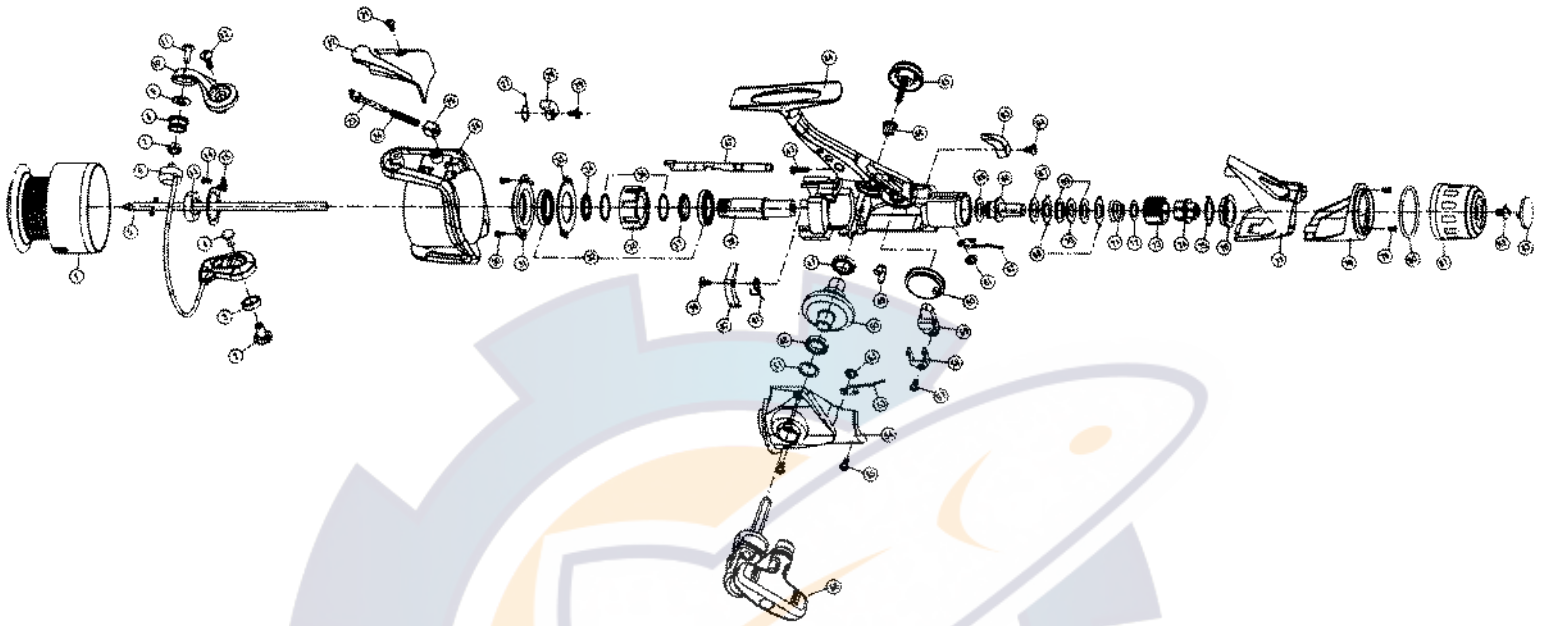


**Daiwa**  
COMMITTED TO TOTAL QUALITY  
SPINNING REEL

**CAPRICE 3550**



Key No.	Parts No.	Parts Name	Key No.	Parts No.	Parts Name
1	W38-0033	SPOOL	45	W34-4802	HANDLE SCREW
1	W38-0034	SPOOL (EXTRA)	46	W34-4702	HANDLE COLLAR
2	W34-0201	BAIL HOLDER NUT	47	W34-5301	DRIVE GEAR BUSHING
3	W38-8101	BAIL ARM COLLAR	48	W34-3601	BALL BEARING D
4	W38-0201	BAIL HOLDER SCREW	49	W34-3901	A/R PAWL SPRING A
5	W38-0302	MAIN SHAFT	50	W34-3802	DRIVE GEAR
6	W33-7906	BAIL	51	W34-3701	DRIVE GEAR WASHER
7	W33-8202	LINE ROLLER BUSHING	52	W38-5001	CLICK LEAF SPRING RET
8	W38-0602	LINE ROLLER	53	W38-5101	CLICK LEAF SPRING A
9	W33-8201	LINE ROLLER COLLAR	54	W38-5207	SIDE COVER
10	W38-0807	BAIL ARM	55	W38-5301	SIDE COVER SCREW
11	W38-0902	LINE ROLLER SCREW	56	W38-5407	HANDLE
12	W33-8401	BAIL ARM SCREW	57	W38-5501	OSC SLIDER RET PLT SCREW
13	W38-1102	ROTOR NUT	58	W38-5602	OSC SLIDER RET
14	W33-9101	ROTOR NUT HOLD PLT SCREW	59	W38-5702	OSC SLIDER
15	W33-9501	ROTOR NUT HOLD PLT	60	W34-2703	OSC GEAR
21	W38-1901	BAIL SPRING COVER SCREW	61	W38-5001	CLICK LEAF SPRING RET
22	W34-0303	BAIL SPRING COVER	62	W38-5901	CLICK LEAF SPRING B
23	W33-8702	BAIL SPRING SHAFT	63	W34-2401	A/R LEVER
24	W38-2202	BAIL SPRING	64	W38-6101	A/R LEVER SCREW
25	W33-8901	BAIL SPRING HOLDER	65	W38-6201	DRAG METAL WASHER
26	W38-2409	ROTOR	66	W38-6302	DRAG METAL A
27	W34-0501	BAIL TRIP LEVER SPRING	67	W38-6401	DRAG WASHER A
28	W34-0602	BAIL TRIP LEVER	68	W38-6501	EARED WASHER
29	W34-0703	BAIL TRIP LEVER SCREW	69	W38-6601	DRAG WASHER B
30	W38-2901	BEARING RET SCREW	70	W38-6701	KEY WASHER
31	W34-0901	BEARING RET A	71	W38-6801	DRAG COIL SPRING
32	W34-1701	BALL BEARING C	72	W38-6901	DRAG SCREW WASHER
33	W34-1101	BEARING RET B	73	W38-7001	DRAG SCREW
34	W34-1201	ROLLER CLUTCH COLLAR	74	W38-7101	DRAG METAL B
35	W34-1501	ROLLER CLUTCH WASHER	75	W38-7201	DRAG COLLAR
36	W34-1401	ROLLER CLUTCH	76	W38-7301	DRAG SCREW
37	W34-1601	BALL BEARING COLLAR B	77	W38-7407	REAR COVER A
38	W38-3706	PINION GEAR	78	W38-7502	REAR COVER B
39	W38-3801	A/R PAWL SCREW	79	W38-7601	REAR COVER B SCREW
40	W34-4501	A/R PAWL	80	W38-7701	O RING
41	W34-4401	A/R PAWL SPRING B	81	W38-7801	DRAG KNOB
42	W34-2003	A/R CAM	82	W38-7901	DRAG METAL SCREW
43	W38-4201	REAR COVER A SCREW	83	W38-8001	DRAG METAL SCREW CAP
44	W38-4307	BODY			